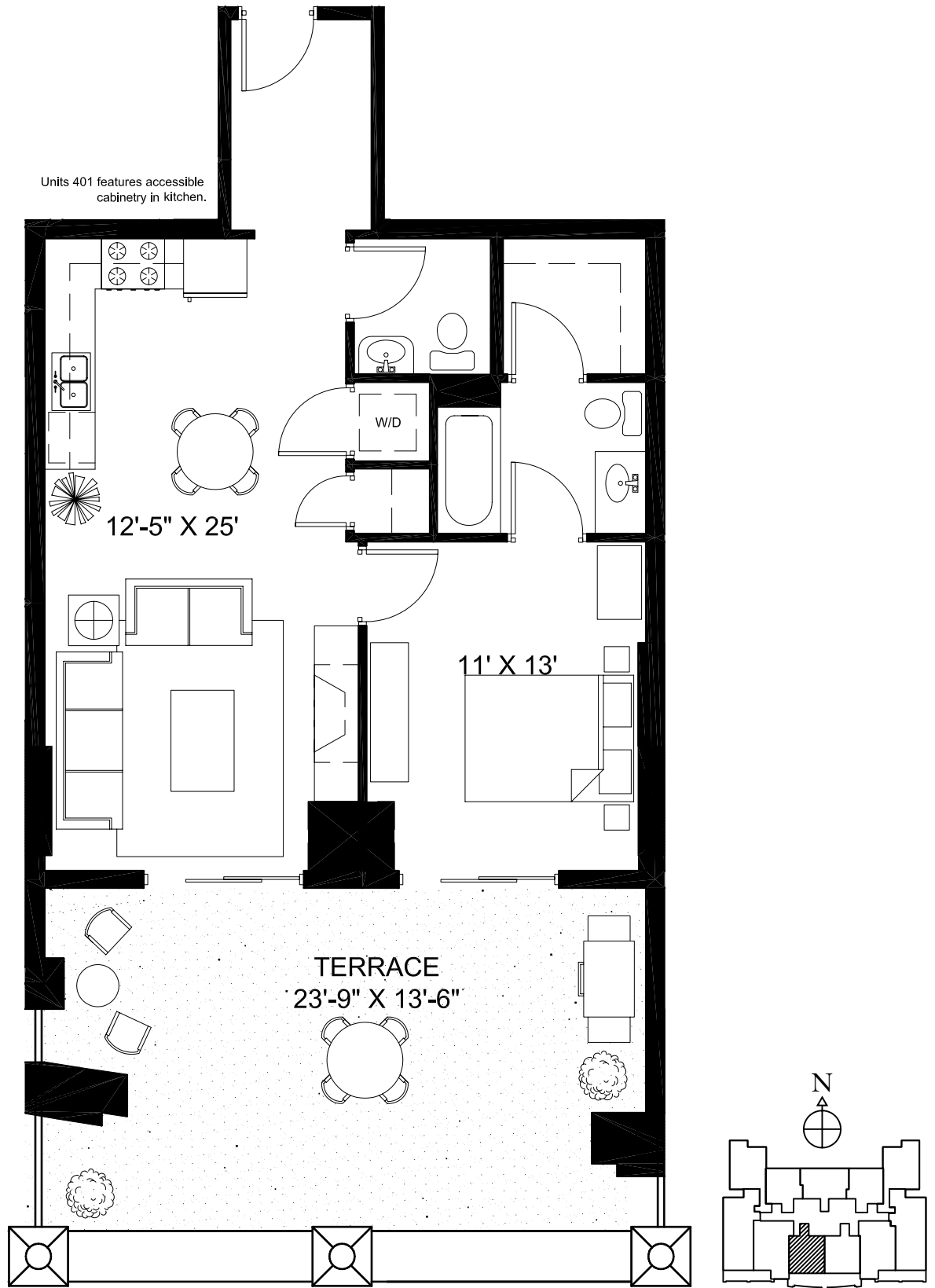


# TERRACE LEVEL UNIT 401

Units 401 features accessible  
cabinetry in kitchen.



Developer reserves right to change floor plans to accommodate structural and mechanical elements. Priced subject to change without notice. Plans are artist's renderings. Dimensions are approximate and should not be used as precise measurements in establishing value. All dimensions are subject to change.

updated: 07.07.04

SCOTT GRADEN: 312.475.7757 JIM LUBY: 312.475.7777

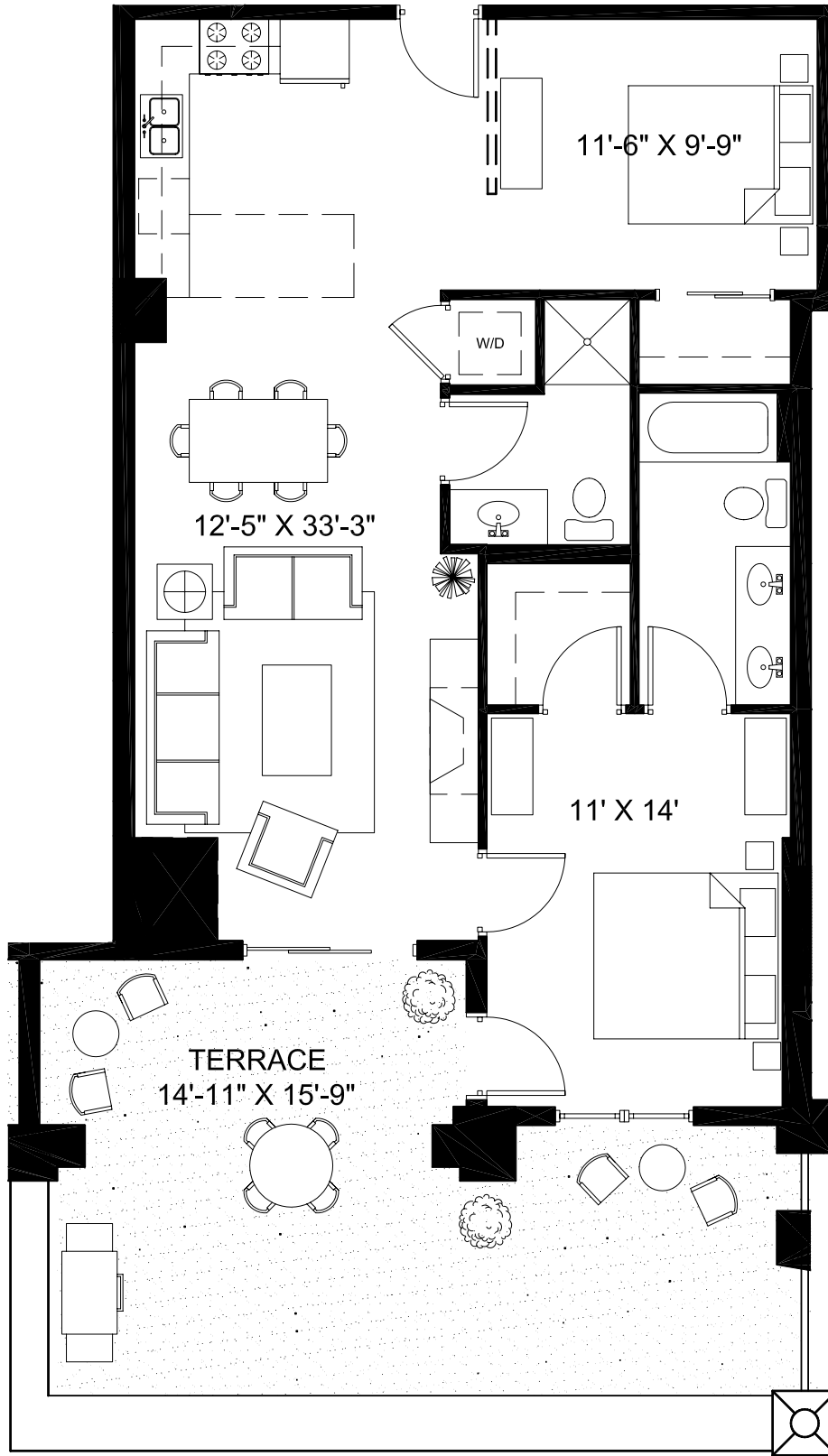
Park View East

**SEDGWICK**  
PROPERTIES  
Development Corporation

**Koenig & Strey** **GMAC**  
Real Estate

828 WEST GRACE  
www.parkvieweast.com

# TERRACE LEVEL UNIT 402



Developer reserves right to change floor plans to accommodate structural and mechanical elements. Priced subject to change without notice. Plans are artist's renderings. Dimensions are approximate and should not be used as precise measurements in establishing value. All dimensions are subject to change.

updated: 07.07.04

SCOTT GRADEN: 312.475.7757 JIM LUBY: 312.475.7777

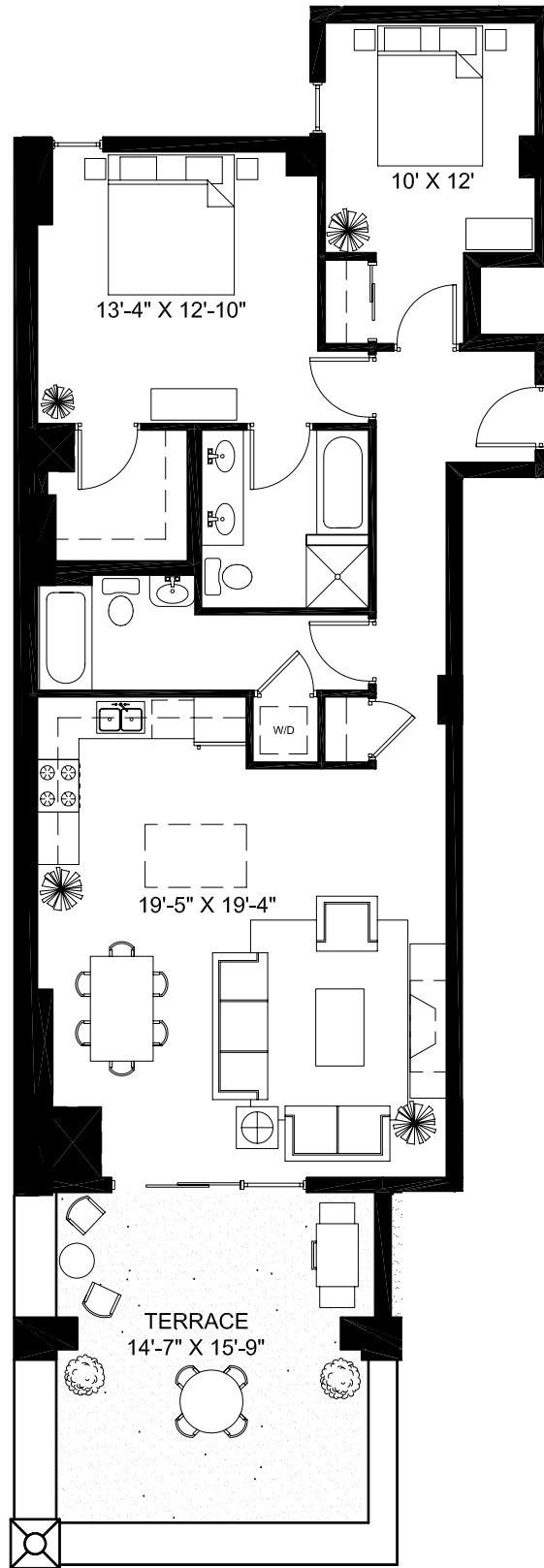
Park View East

**SEDGWICK**  
PROPERTIES  
Development Corporation

**Koenig & Strey** **GMAC**  
Real Estate

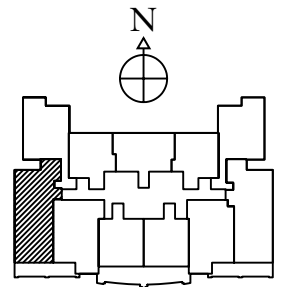
828 WEST GRACE  
www.parkvieweast.com

# TERRACE LEVEL UNIT 403



*Developer reserves right to change floor plans to accommodate structural and mechanical elements. Priced subject to change without notice. Plans are artist's renderings. Dimensions are approximate and should not be used as precise measurements in establishing value. All dimensions are subject to change.*

updated: 07.07.04



SCOTT GRADEN: 312.475.7757 JIM LUBY: 312.475.7777

Park View East

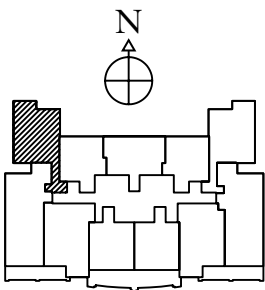
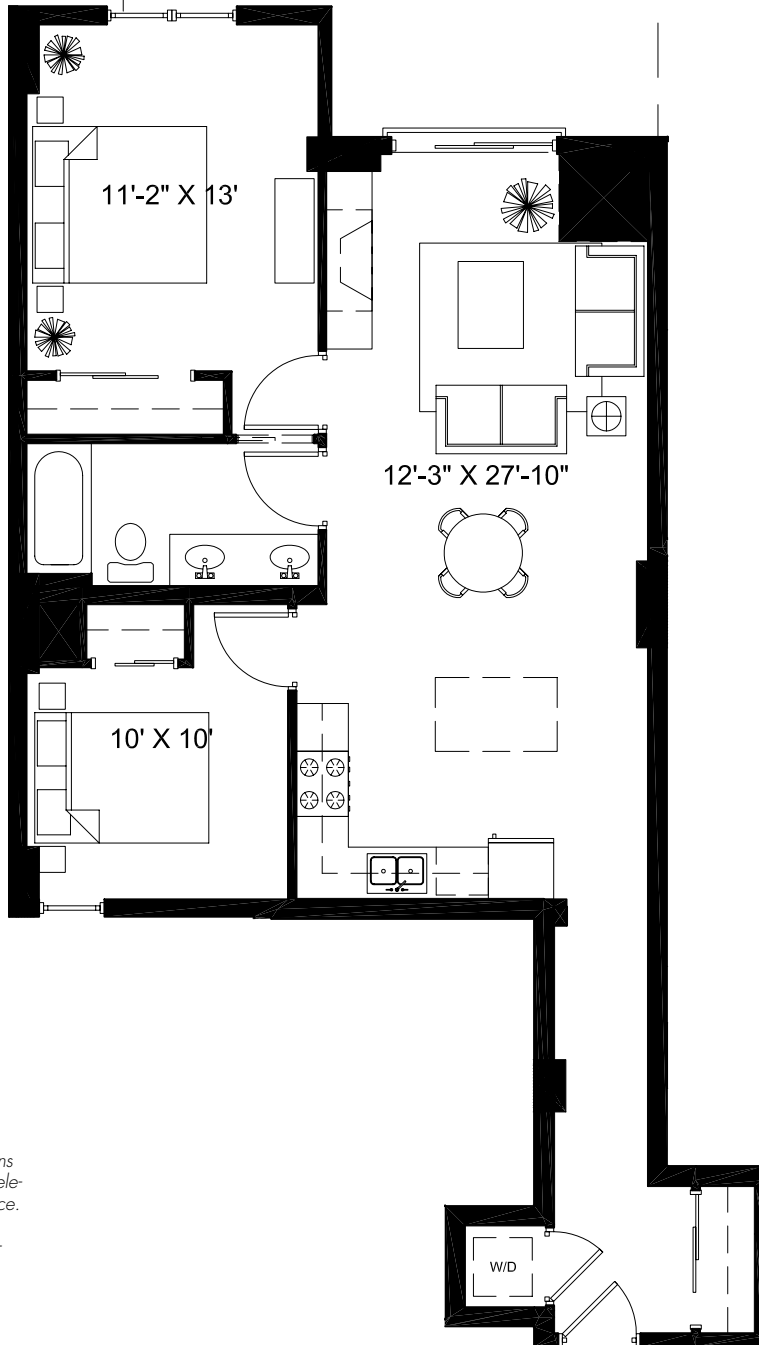
**SEDGWICK**  
PROPERTIES  
Development Corporation

**Koenig & Strey** **GMAC**  
Real Estate

828 WEST GRACE  
www.parkvieweast.com

# TERRACE LEVEL UNIT 404

TERRACE  
(OPTIONAL)  
20'-5" X 16'



*Developer reserves right to change floor plans to accommodate structural and mechanical elements. Priced subject to change without notice. Plans are artist's renderings. Dimensions are approximate and should not be used as precise measurements in establishing value. All dimensions are subject to change.*

updated: 07.07.04

SCOTT GRADEN: 312.475.7757 JIM LUBY: 312.475.7777

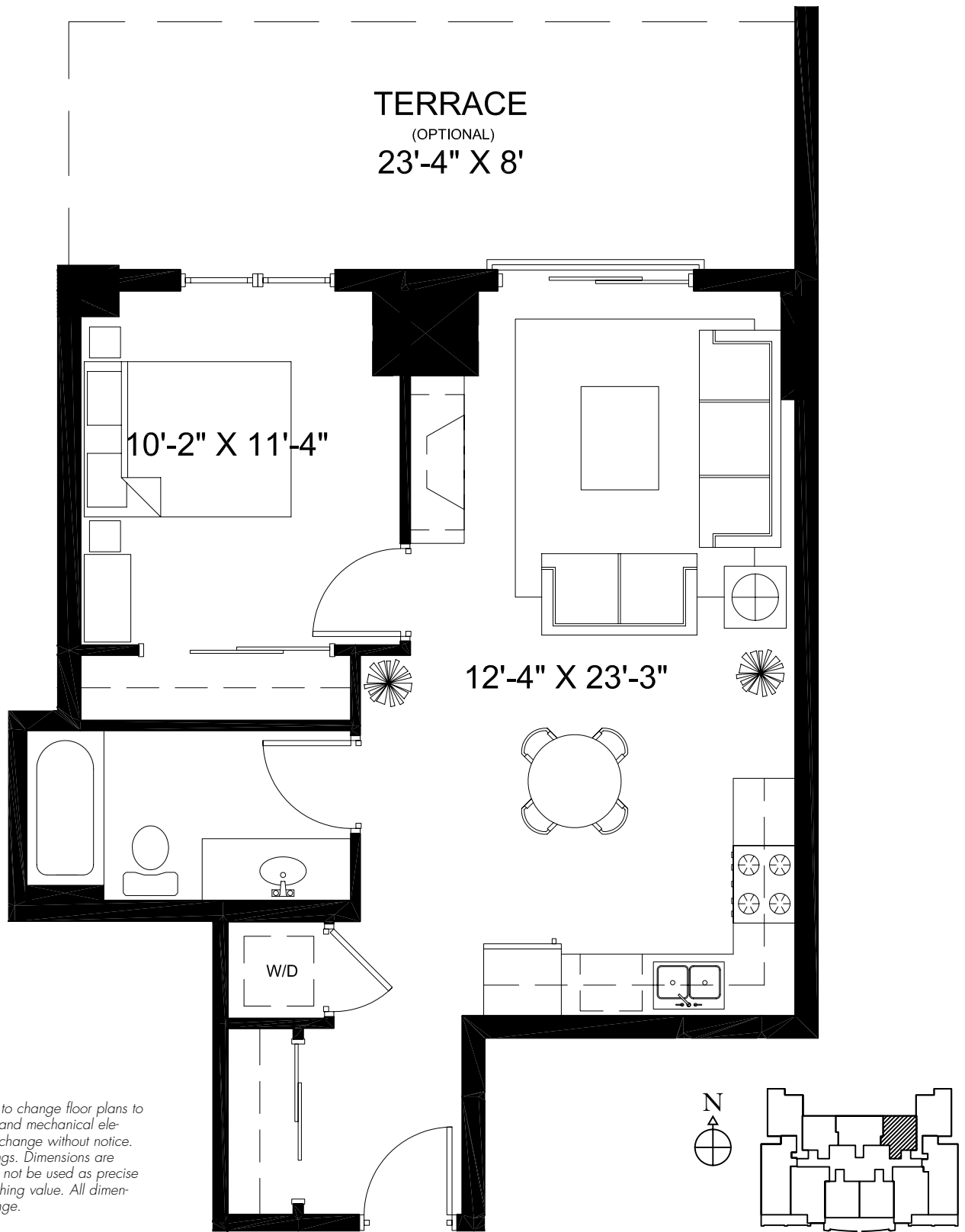
Park View East

**SEDGWICK**  
PROPERTIES  
Development Corporation

**Koenig & Strey** **GMAC**  
Real Estate

828 WEST GRACE  
www.parkvieweast.com

# TERRACE LEVEL UNIT 407



*Developer reserves right to change floor plans to accommodate structural and mechanical elements. Priced subject to change without notice. Plans are artist's renderings. Dimensions are approximate and should not be used as precise measurements in establishing value. All dimensions are subject to change.*

updated: 07.07.04

SCOTT GRADEN: 312.475.7757 JIM LUBY: 312.475.7777

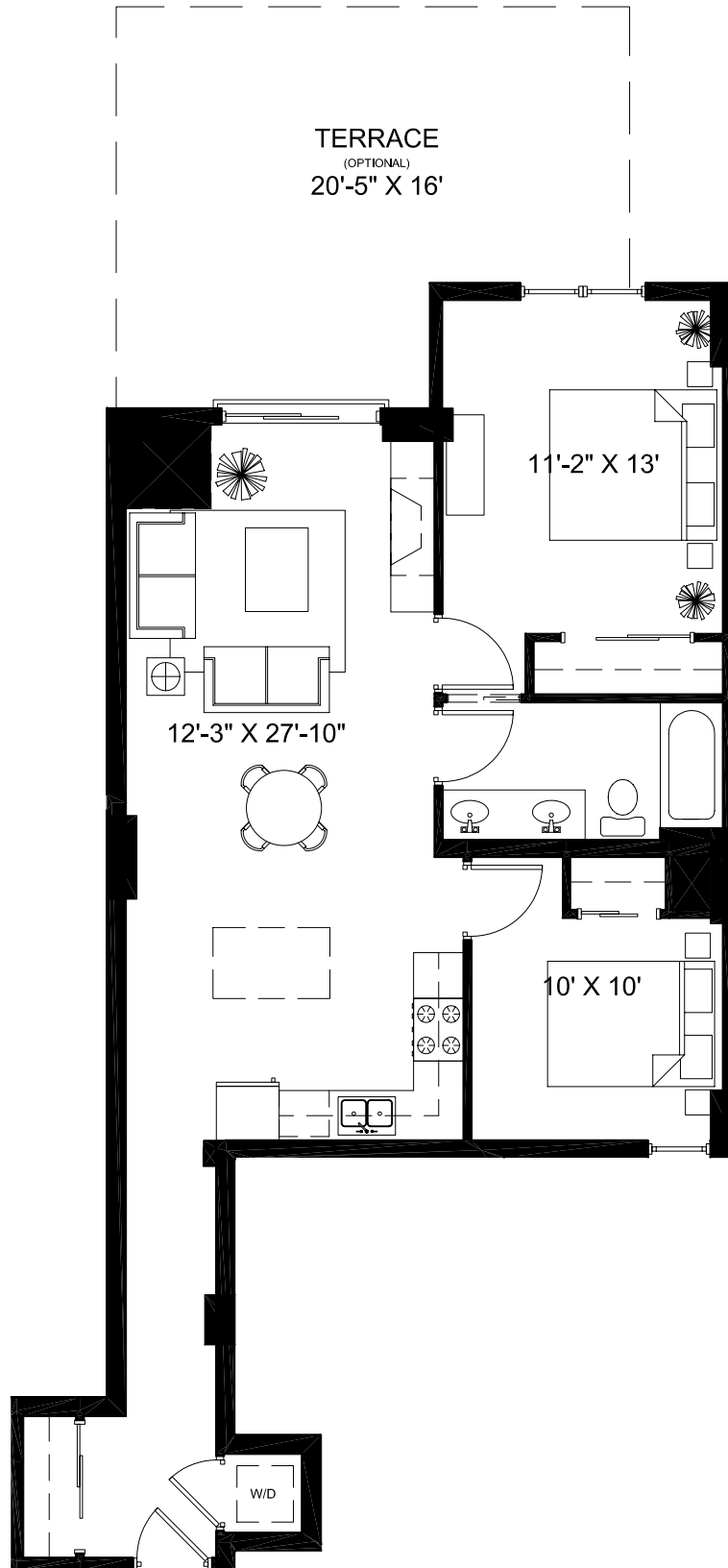
Park View East

**SEDGWICK**  
PROPERTIES  
Development Corporation

**Koenig & Strey** **GMAC**  
Real Estate

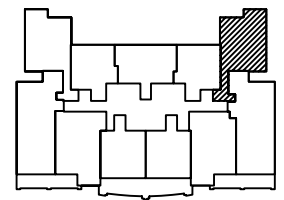
828 WEST GRACE  
[www.parkvieweast.com](http://www.parkvieweast.com)

# TERRACE LEVEL UNIT 408



Developer reserves right to change floor plans to accommodate structural and mechanical elements. Priced subject to change without notice. Plans are artist's renderings. Dimensions are approximate and should not be used as precise measurements in establishing value. All dimensions are subject to change.

updated: 07.07.04



SCOTT GRADEN: 312.475.7757 JIM LUBY: 312.475.7777

Park View East

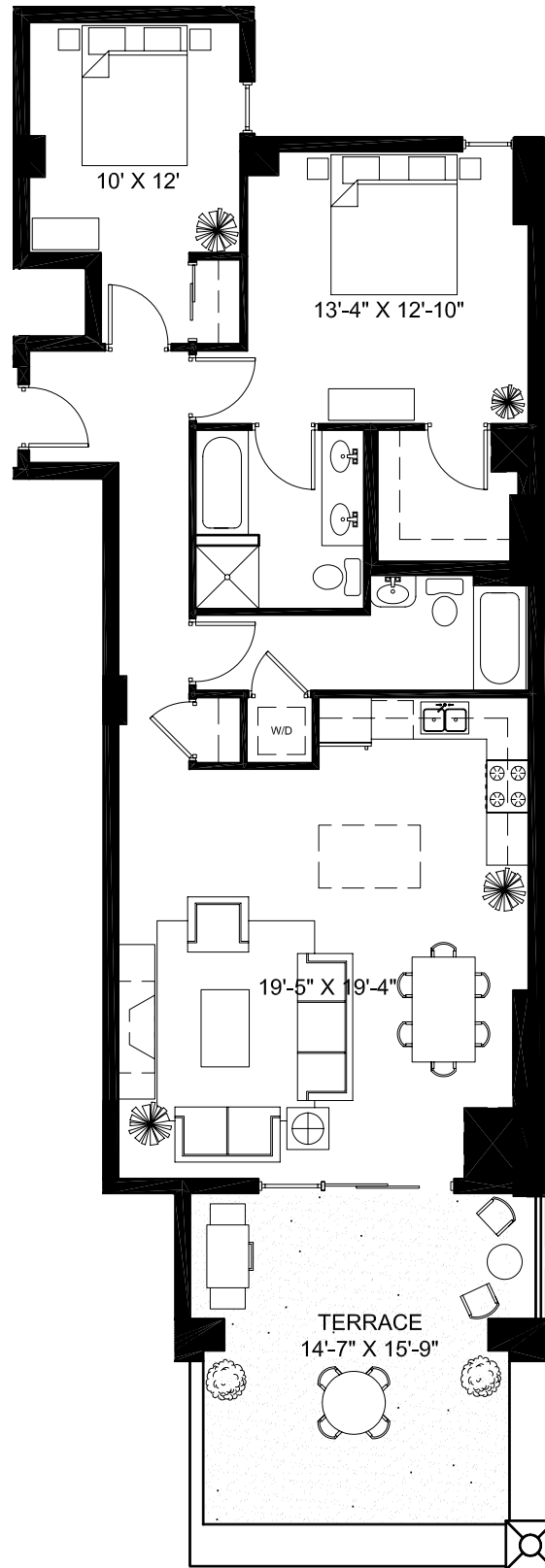
**SEDGWICK**  
PROPERTIES  
Development Corporation

**Koenig & Strey** **GMAC**  
Real Estate



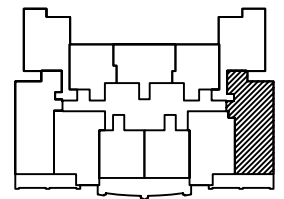
828 WEST GRACE  
[www.parkvieweast.com](http://www.parkvieweast.com)

# TERRACE LEVEL UNIT 409



*Developer reserves right to change floor plans to accommodate structural and mechanical elements. Priced subject to change without notice. Plans are artist's renderings. Dimensions are approximate and should not be used as precise measurements in establishing value. All dimensions are subject to change.*

updated: 07.07.04



SCOTT GRADEN: 312.475.7757 JIM LUBY: 312.475.7777

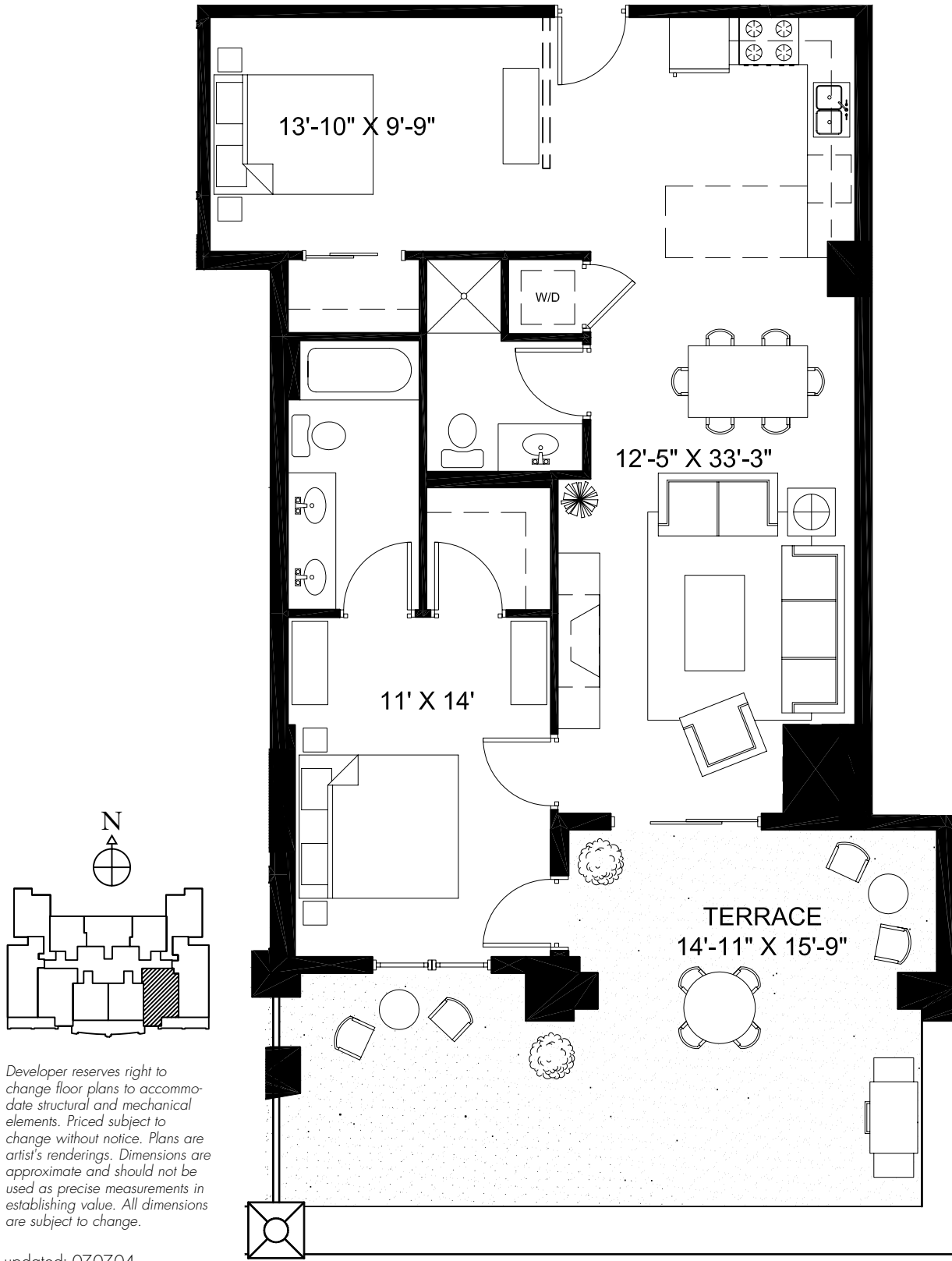
Park View East

**SEDGWICK**  
PROPERTIES  
Development Corporation

**Koenig & Strey** **GMAC**  
Real Estate

828 WEST GRACE  
[www.parkvieweast.com](http://www.parkvieweast.com)

# TERRACE LEVEL UNIT 410



Developer reserves right to change floor plans to accommodate structural and mechanical elements. Priced subject to change without notice. Plans are artist's renderings. Dimensions are approximate and should not be used as precise measurements in establishing value. All dimensions are subject to change.

updated: 07.07.04

SCOTT GRADEN: 312.475.7757 JIM LUBY: 312.475.7777

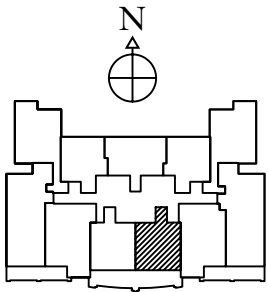
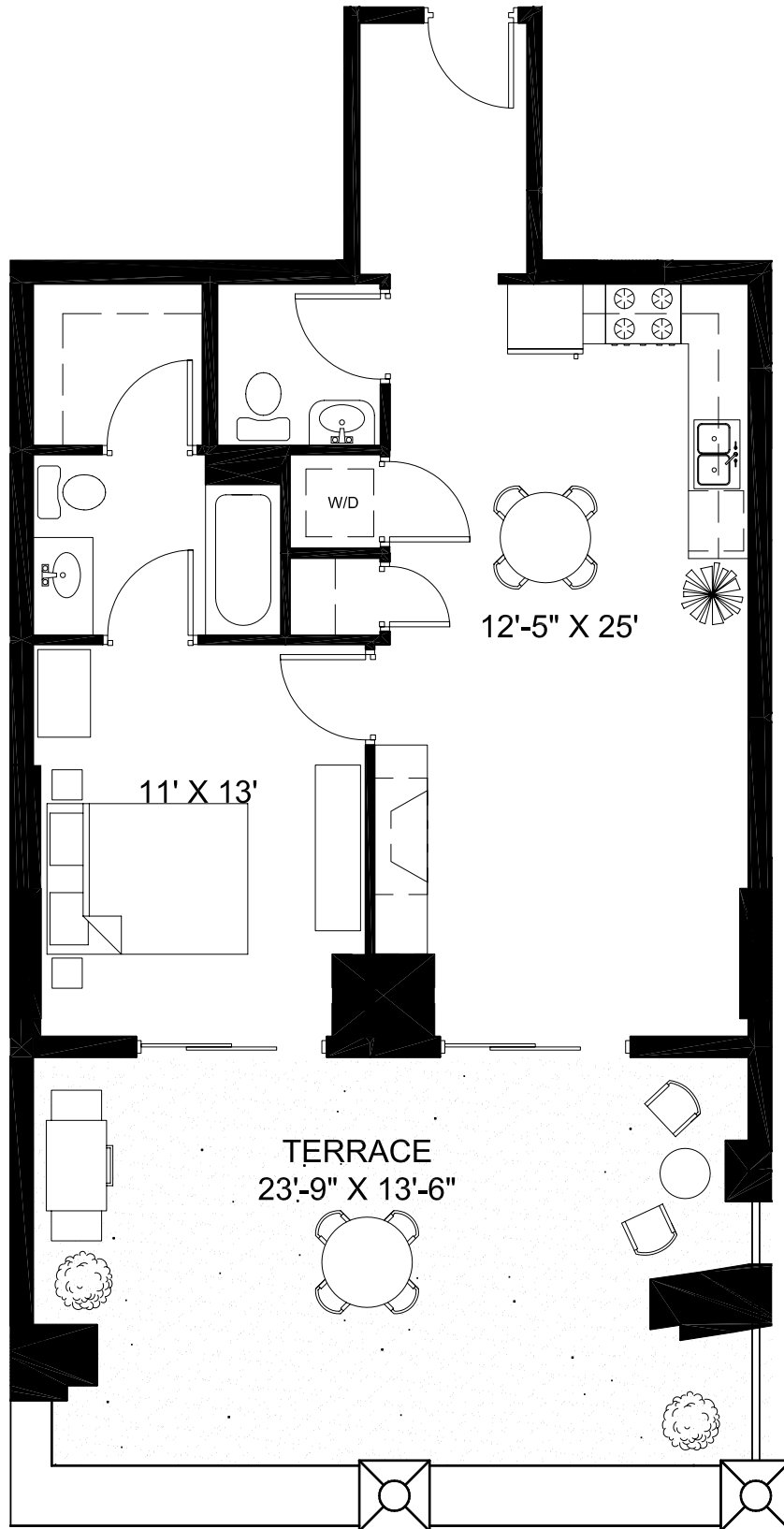
Park View East



828 WEST GRACE  
www.parkvieweast.com



# TERRACE LEVEL UNIT 411



Developer reserves right to change floor plans to accommodate structural and mechanical elements. Priced subject to change without notice. Plans are artist's renderings. Dimensions are approximate and should not be used as precise measurements in establishing value. All dimensions are subject to change.

updated: 07.07.04

SCOTT GRADEN: 312.475.7757 JIM LUBY: 312.475.7777

Park View East

**SEDGWICK**  
PROPERTIES  
Development Corporation

**Koenig & Strey** **GMAC**  
Real Estate

828 WEST GRACE  
[www.parkvieweast.com](http://www.parkvieweast.com)