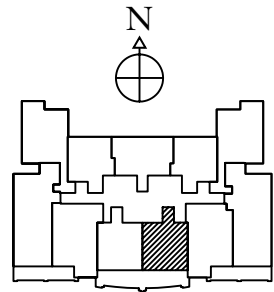
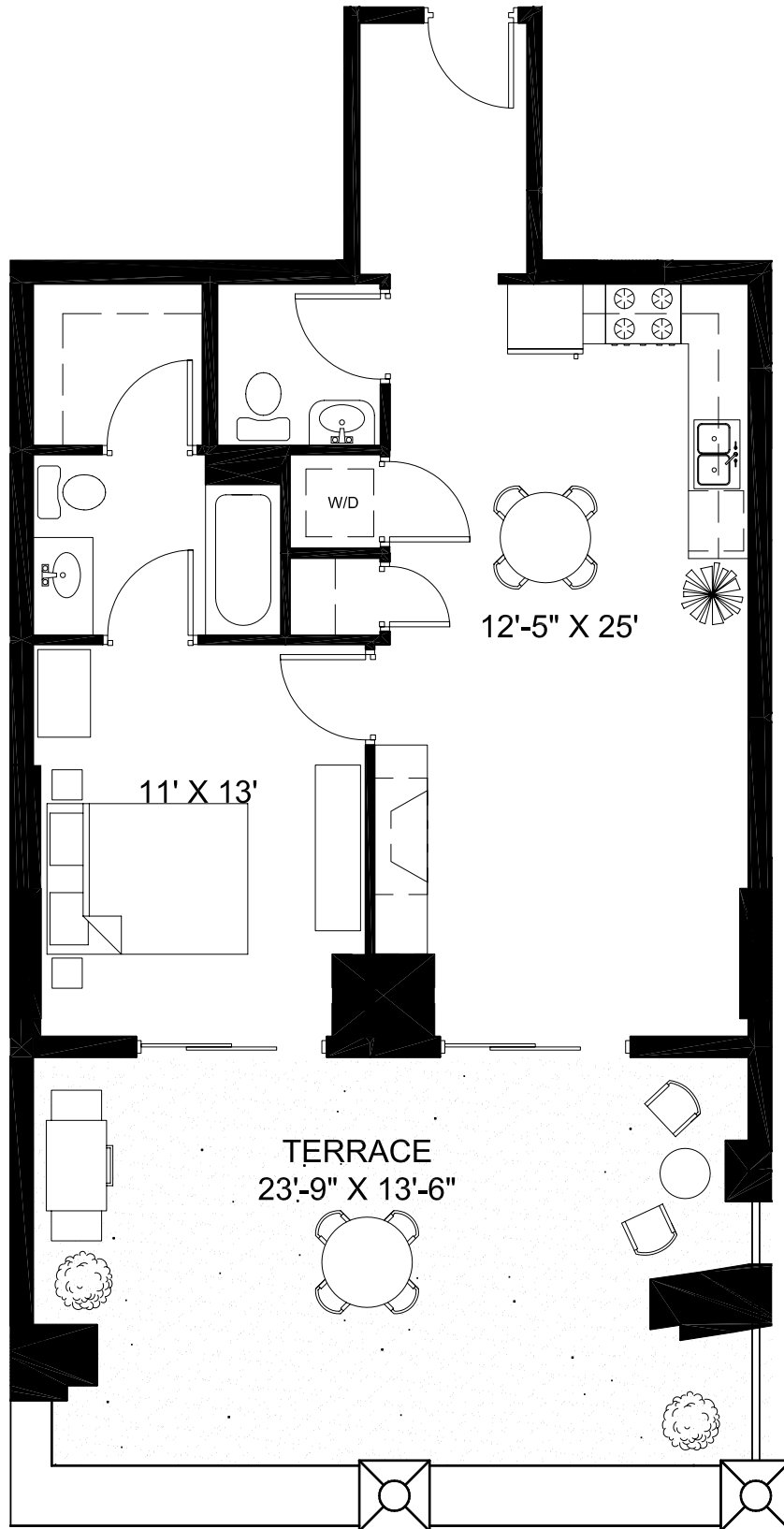


TERRACE LEVEL UNIT 411



Developer reserves right to change floor plans to accommodate structural and mechanical elements. Priced subject to change without notice. Plans are artist's renderings. Dimensions are approximate and should not be used as precise measurements in establishing value. All dimensions are subject to change.

updated: 07.07.04

SCOTT GRADEN: 312.475.7757 JIM LUBY: 312.475.7777

Park View East

SEDGWICK
PROPERTIES
Development Corporation

Koenig & Strey **GMAC**
Real Estate

828 WEST GRACE
www.parkvieweast.com