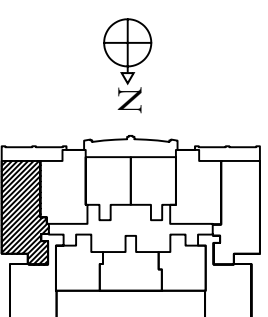
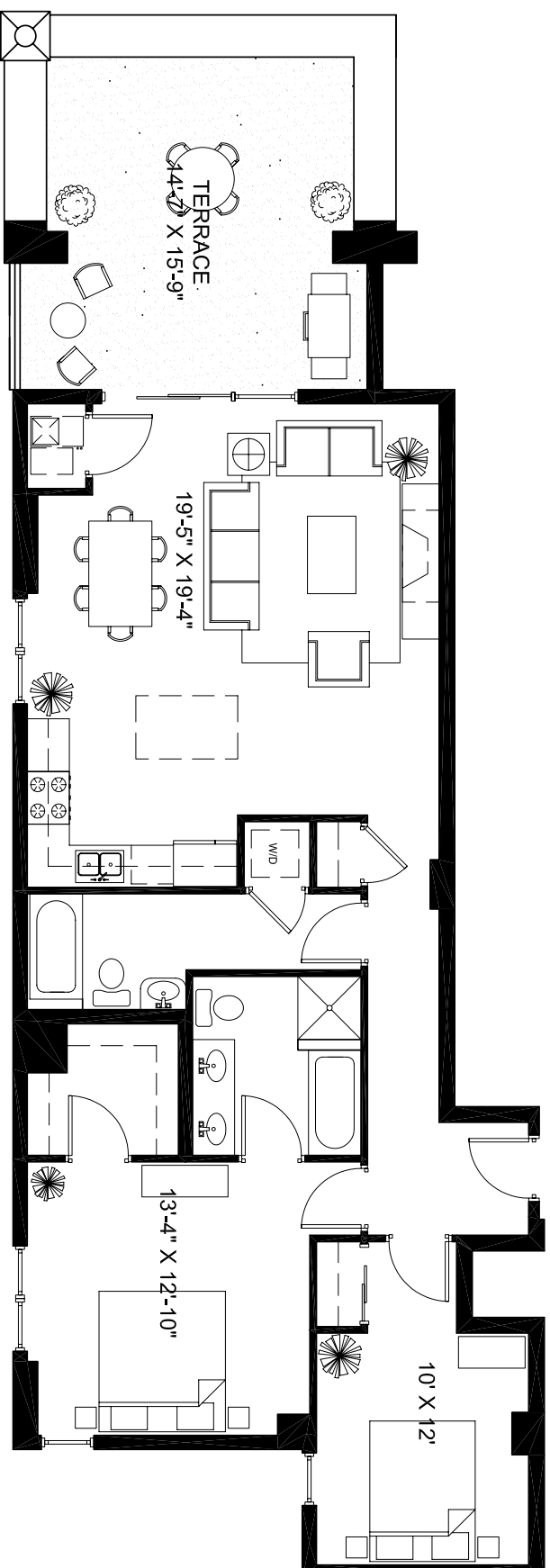


PARK VIEW EAST - 828 WEST GRACE

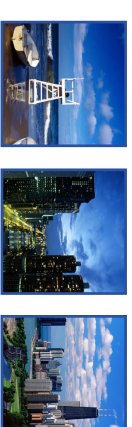


updated: 08.07.04

Developer reserves right to change floor plans to accommodate structural and mechanical elements. Prices subject to change without notice. Plans are artist's renderings. Dimensions are approximate and should not be used as precise measurements in establishing value. All dimensions are subject to change.



Park View East



www.parkvieweast.com

for a private presentation please call:

SCOTT GRADEN: 312.475.7757

JIM LUBY: 312.475.7777

SEDGWICK
PROPERTIES
Development Corporation



TERRACE LEVEL UNIT 409