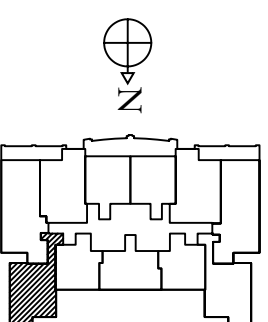
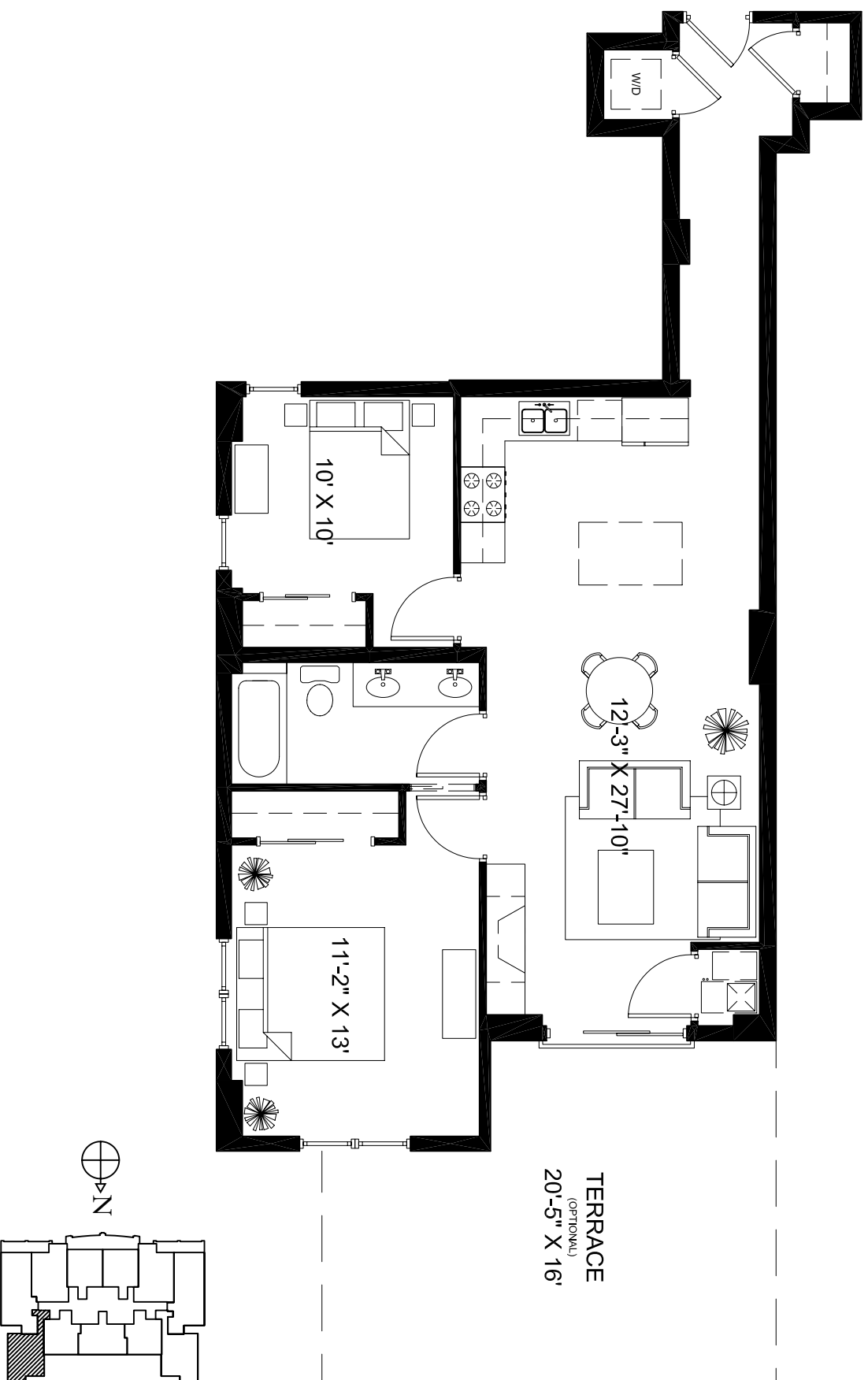


PARK VIEW EAST - 828 WEST GRACE



Park View East



www.parkvieweast.com

for a private presentation please call:

SCOTT GRADEN: 312.475.7757

JIM LUBY: 312.475.7777

SEDGWICK
 PROPERTIES
 Development Corporation



updated: 08.07.04

Developer reserves right to change floor plans to accommodate structural and mechanical elements. Prices subject to change without notice. Plans are artist's renderings. Dimensions are approximate and should not be used as precise measurements in establishing value. All dimensions are subject to change.

TERRACE LEVEL UNIT 408